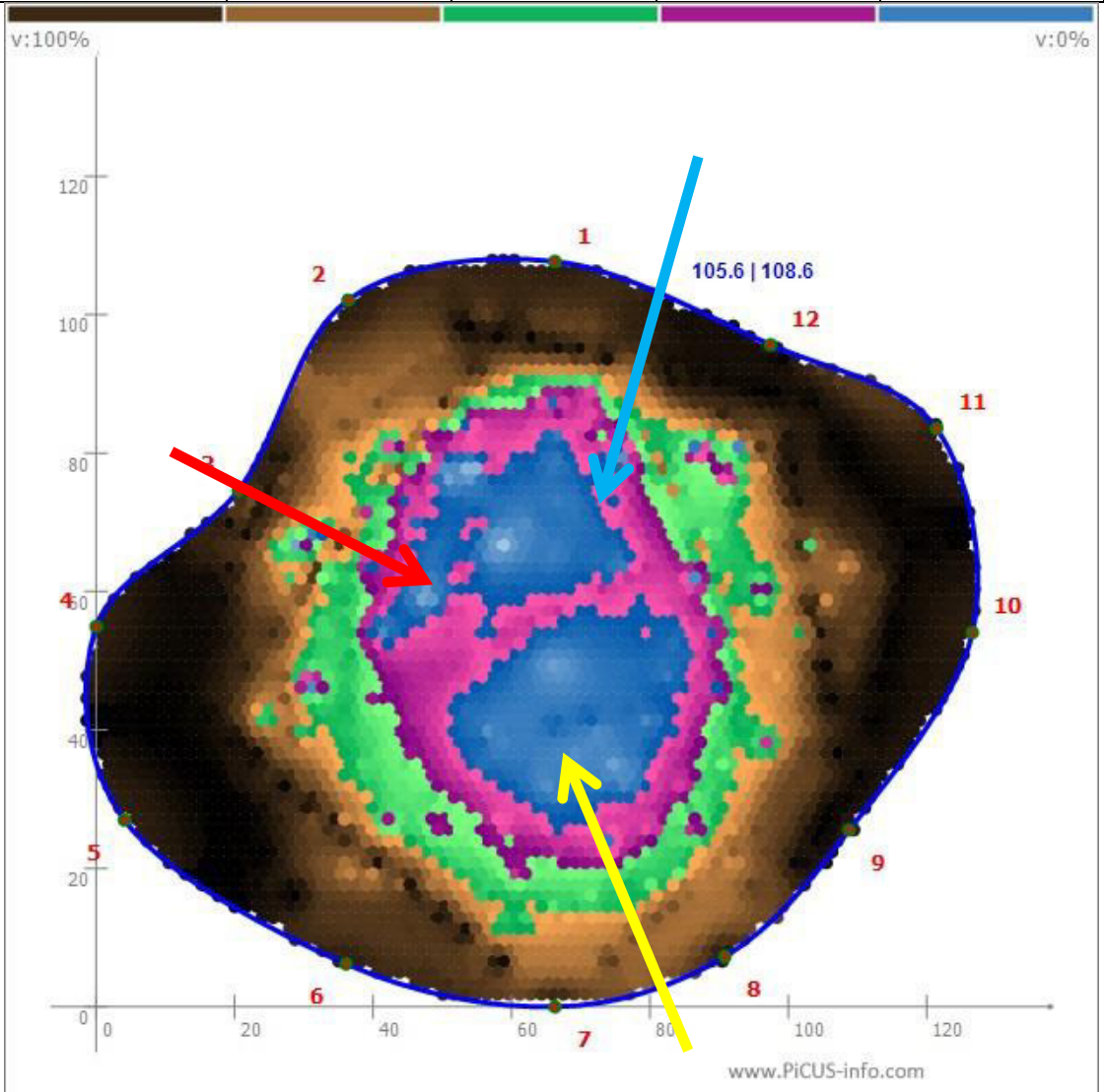


Sonic Tomograph – Results and Interpretation

We produced a sonic tomograph using a PiCUS machine at a height of 95cm above ground level. Sonic tomography would not be possible below this height due to the large basal cavity surrounded by buttress roots. The stem diameter at this height measured 120 cm.

The result of our investigation is displayed below.

Dark Brown	Light Brown	Green	Pink	Blue
Areas of fastest sonic velocity		Areas of intermediate sonic velocity		Areas of slowest sonic velocity
Solid Wood	Some decay may be present	Intermediate decay is likely	Cavity, soft decay, or crack	Cavity, soft decay, or crack



QTRA Licensed User

